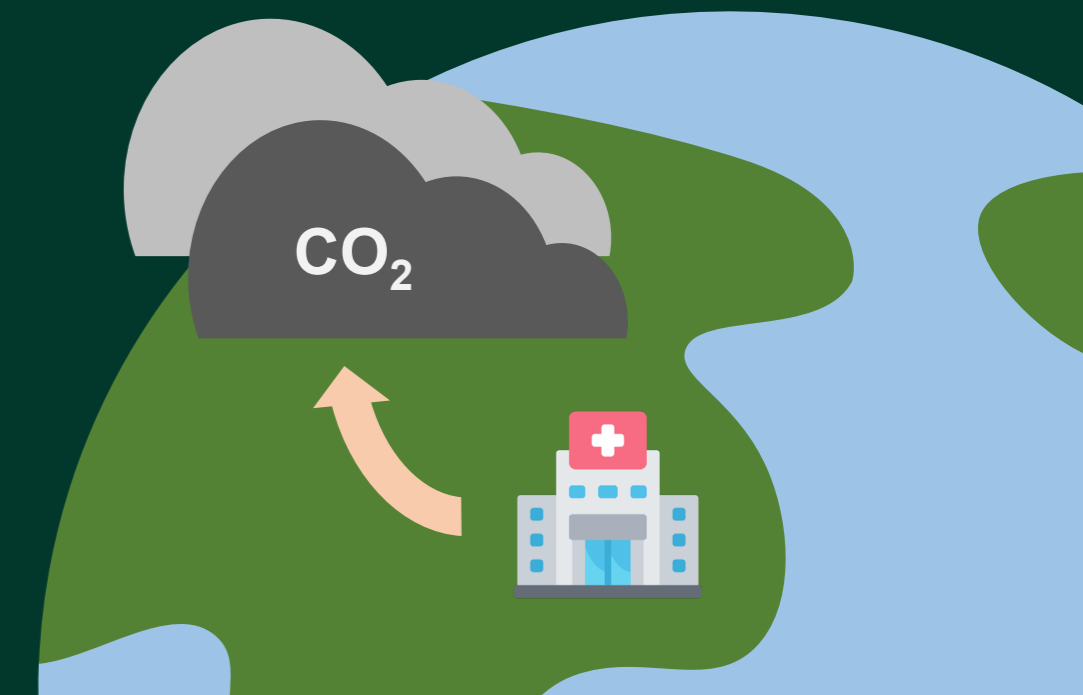


Environmental impacts can be added to other costs in health economic evaluations

Scoping review

N = 26

Jake Williams, Katy Bell, Rachael Morton, Mbathio Dieng



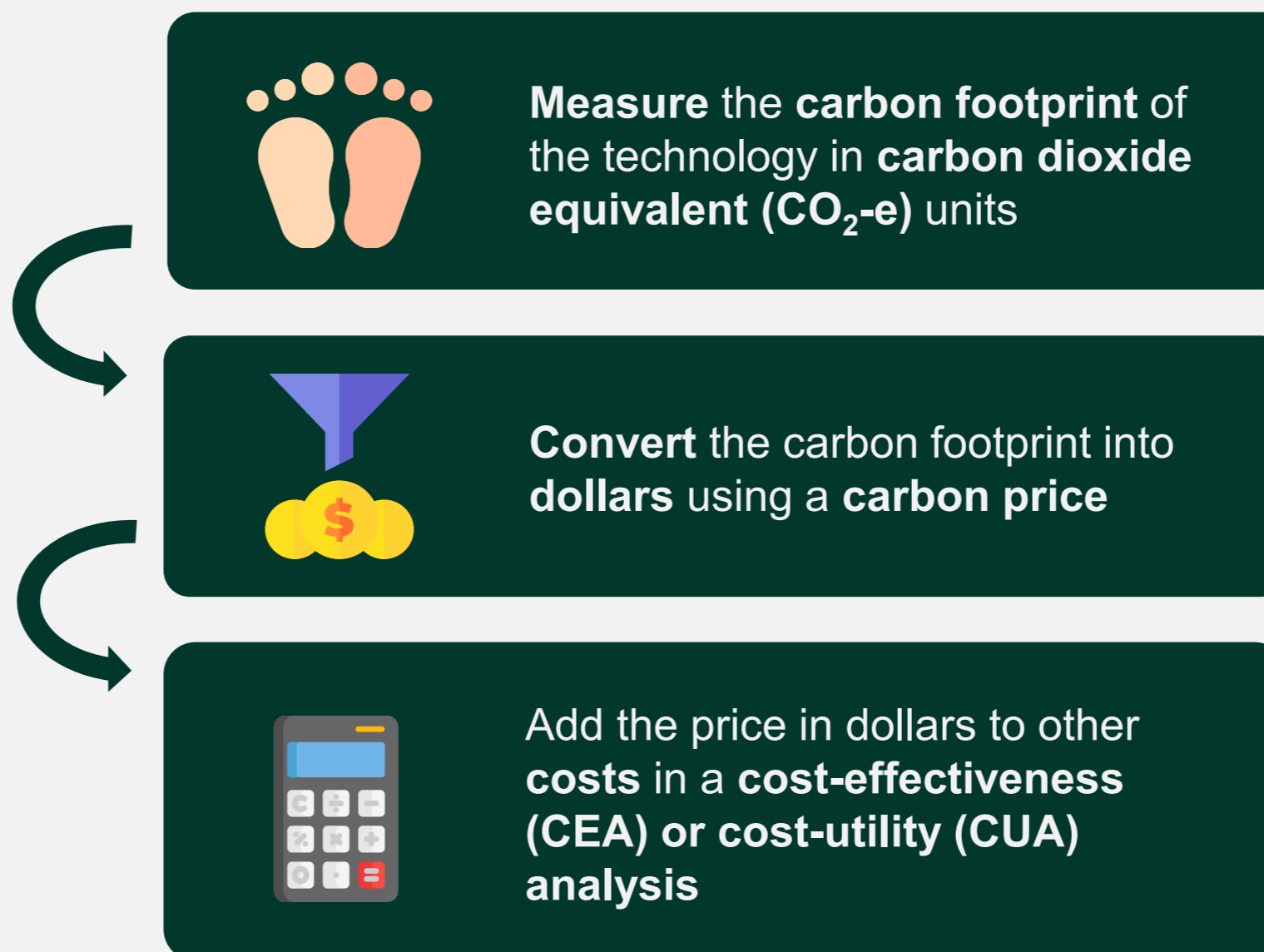
Review Question

What evidence exists about methods to include environmental impacts in health economic evaluations and health technology assessments?

More Information



Most Common Method



Life Cycle Assessment is the best option when carbon footprinting health technologies for economic evaluation

Options include Social Cost of Carbon (SCC) and Non-Traded Price of Carbon (nTPC)

Other Possible Methods

Not demonstrated in identified studies

Multi-Criteria Decision Analysis

Cost-Benefit Analysis

Impact used in HTA priority setting

Impact converted to QALY changes for CUA